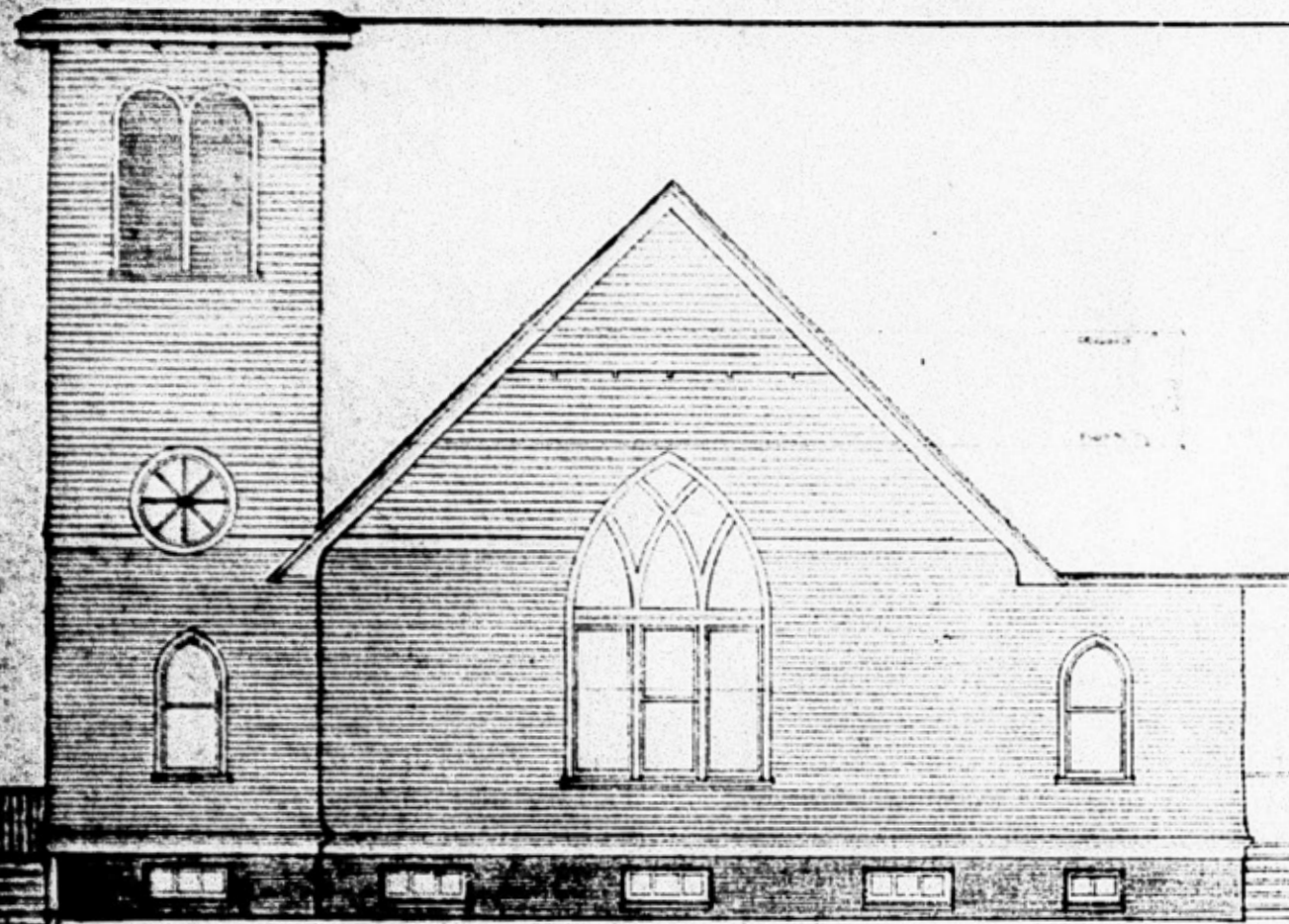
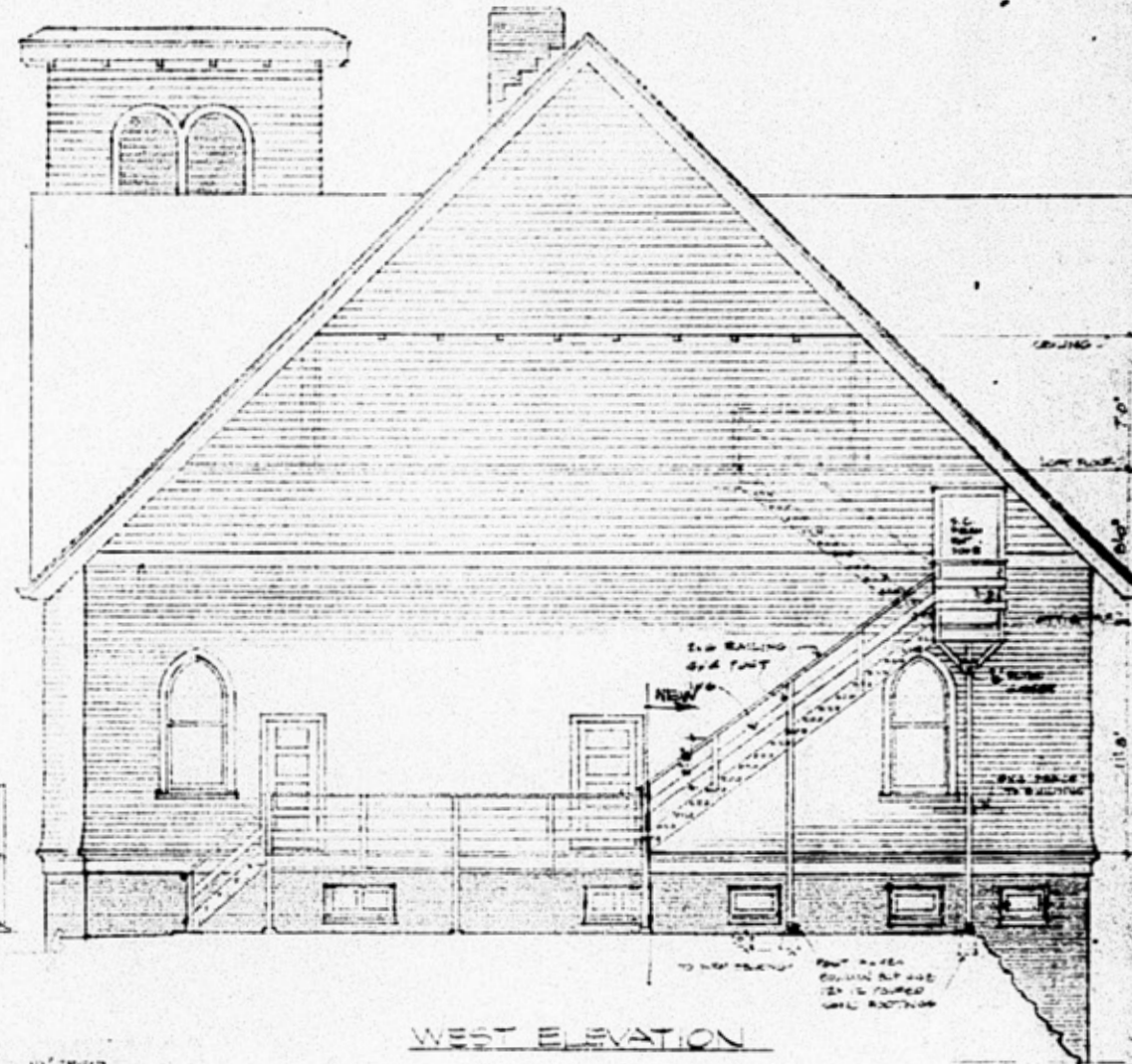


## **APPENDIX 2**

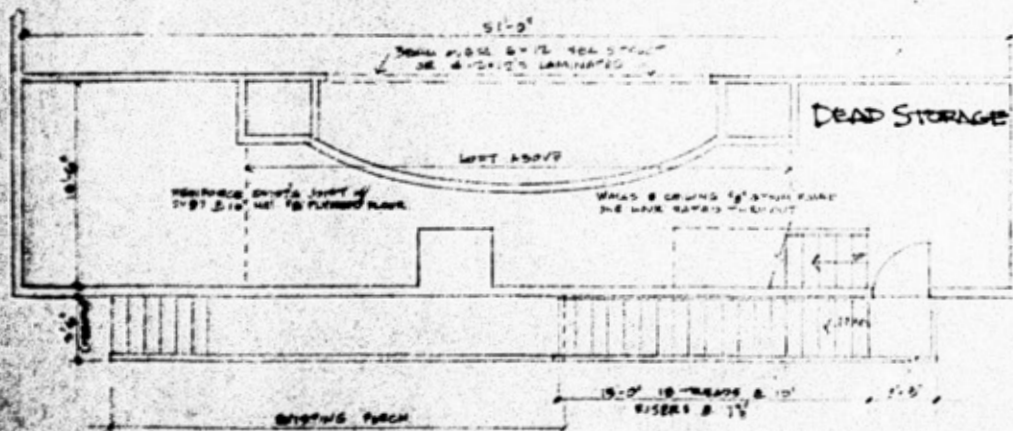
### **ARCHITECTURAL DRAWINGS**



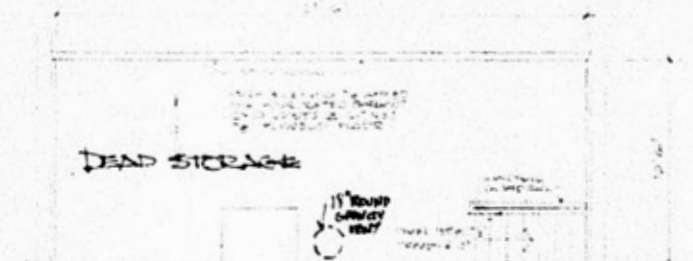
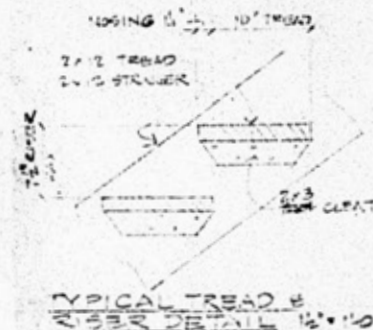
NORTH ELEVATION



WEST ELEVATION



PLAN OF ATTIC

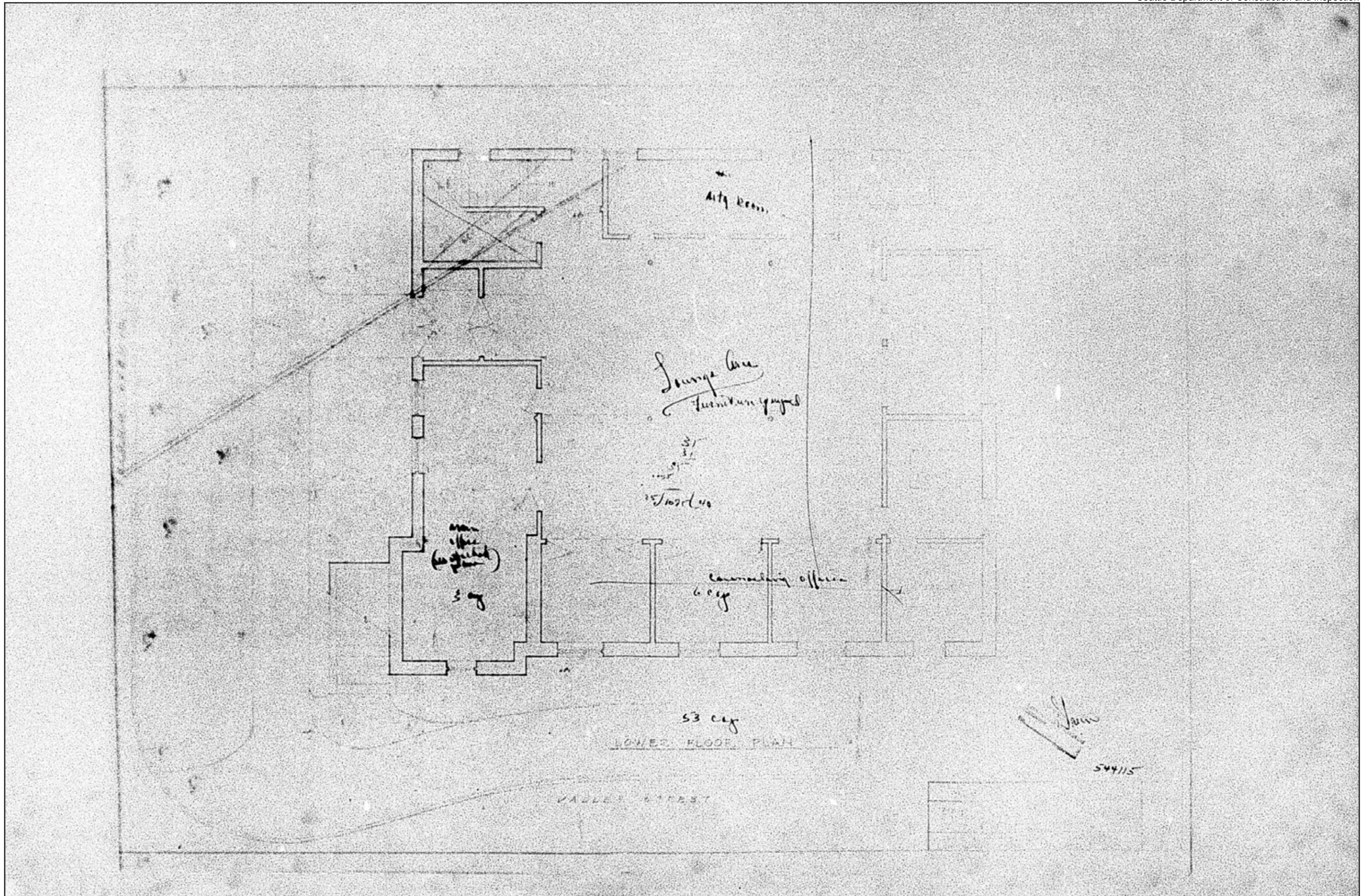


APPROVED  
CITY OF SEATTLE  
DEPARTMENT OF CONSTRUCTION  
FEB 2 1978  
*[Signature]*

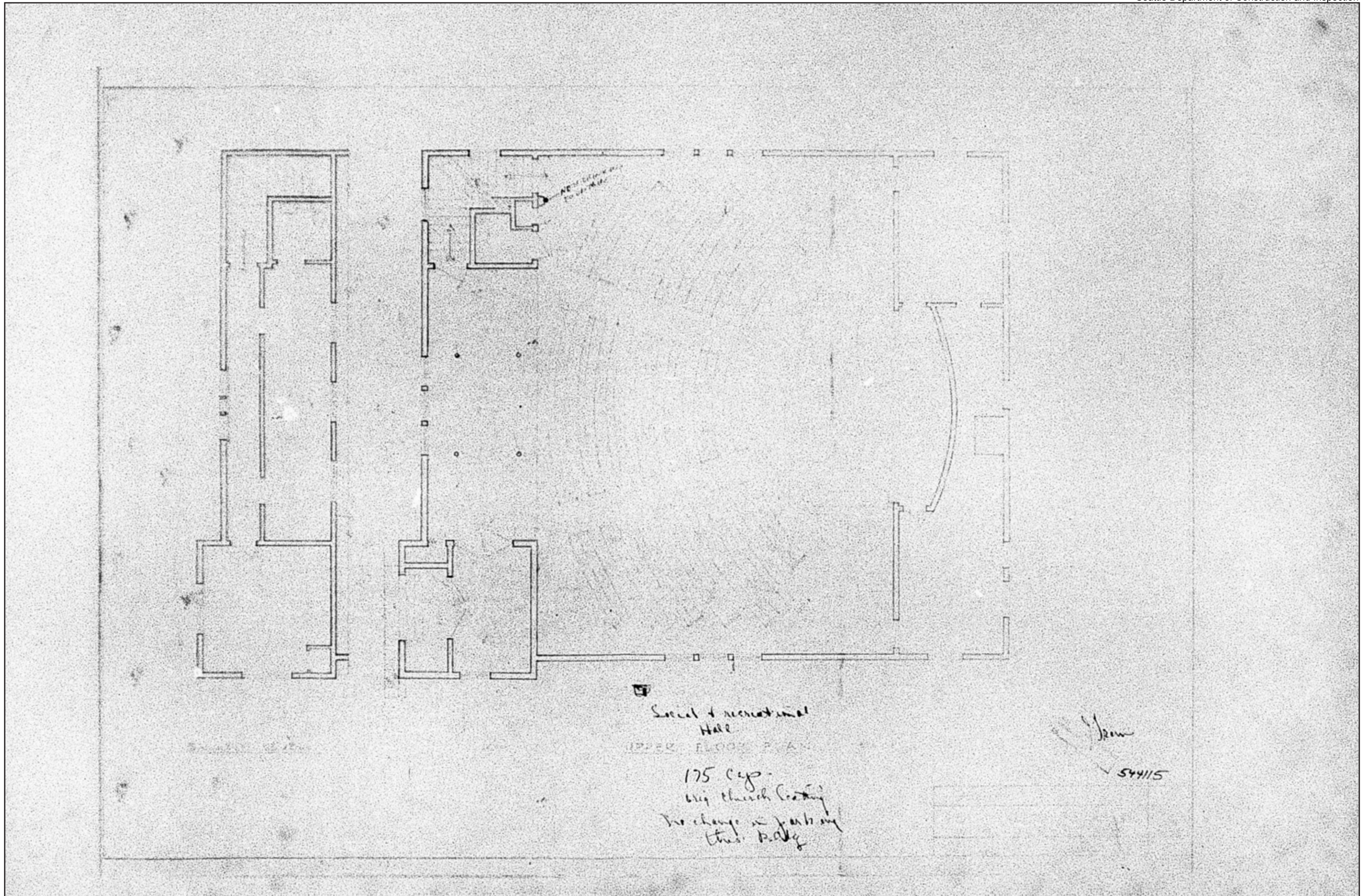
REVISIONS  
NO. 1  
DATE  
BY  
REVISIONS  
NO. 2  
DATE  
BY

REVISED 1-10-76  
REVISED 12-27-77

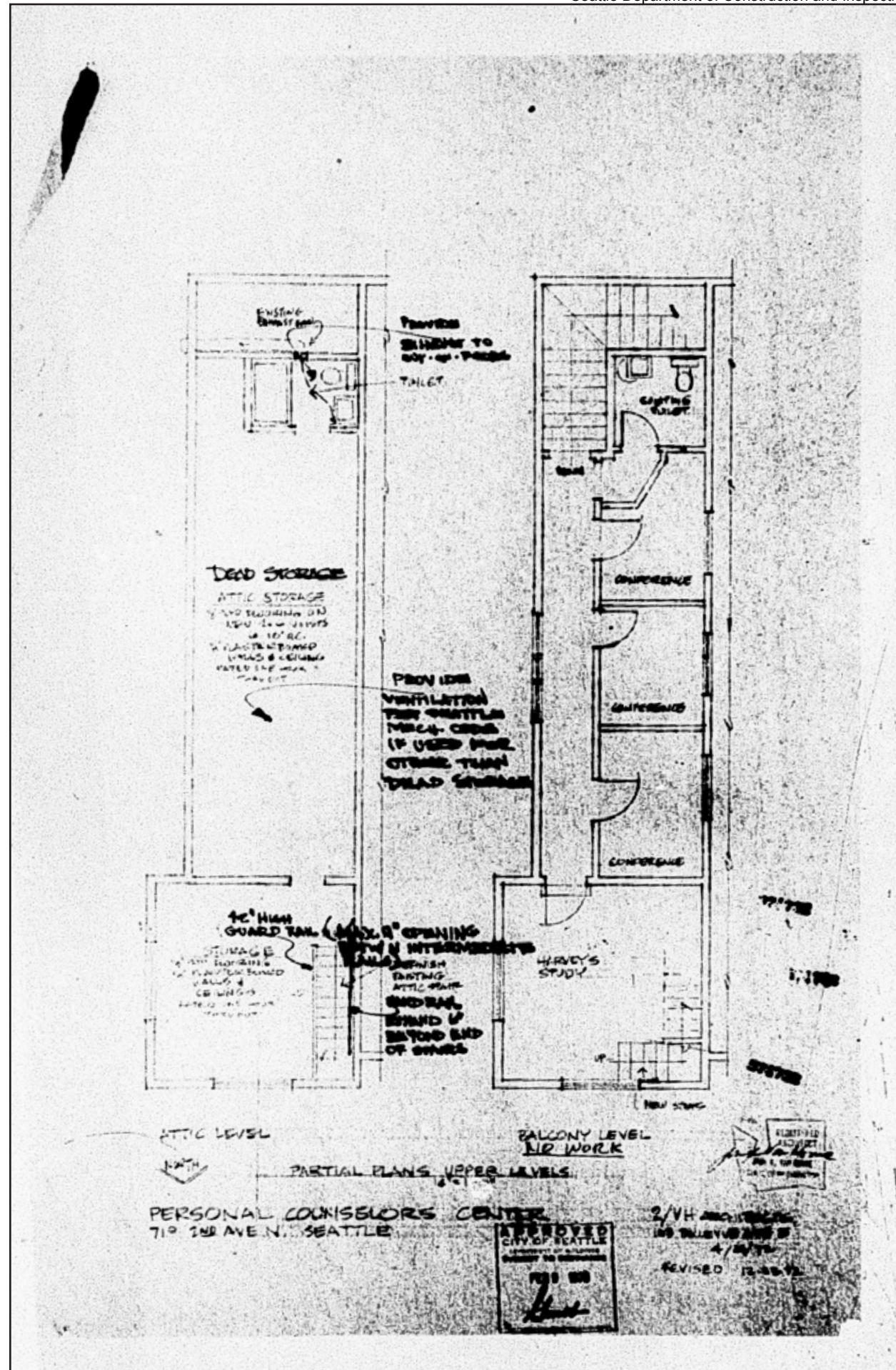
VAN HORNE ARCHITECTS  
VAN HORNE ARCHITECTS  
103 BELLEVUE AVE. E. SEATTLE  
COUNSELORS INC  
715 2ND AVE. N. AT VALLEY ST. SEATTLE  
92. 921 1. 2116. 2



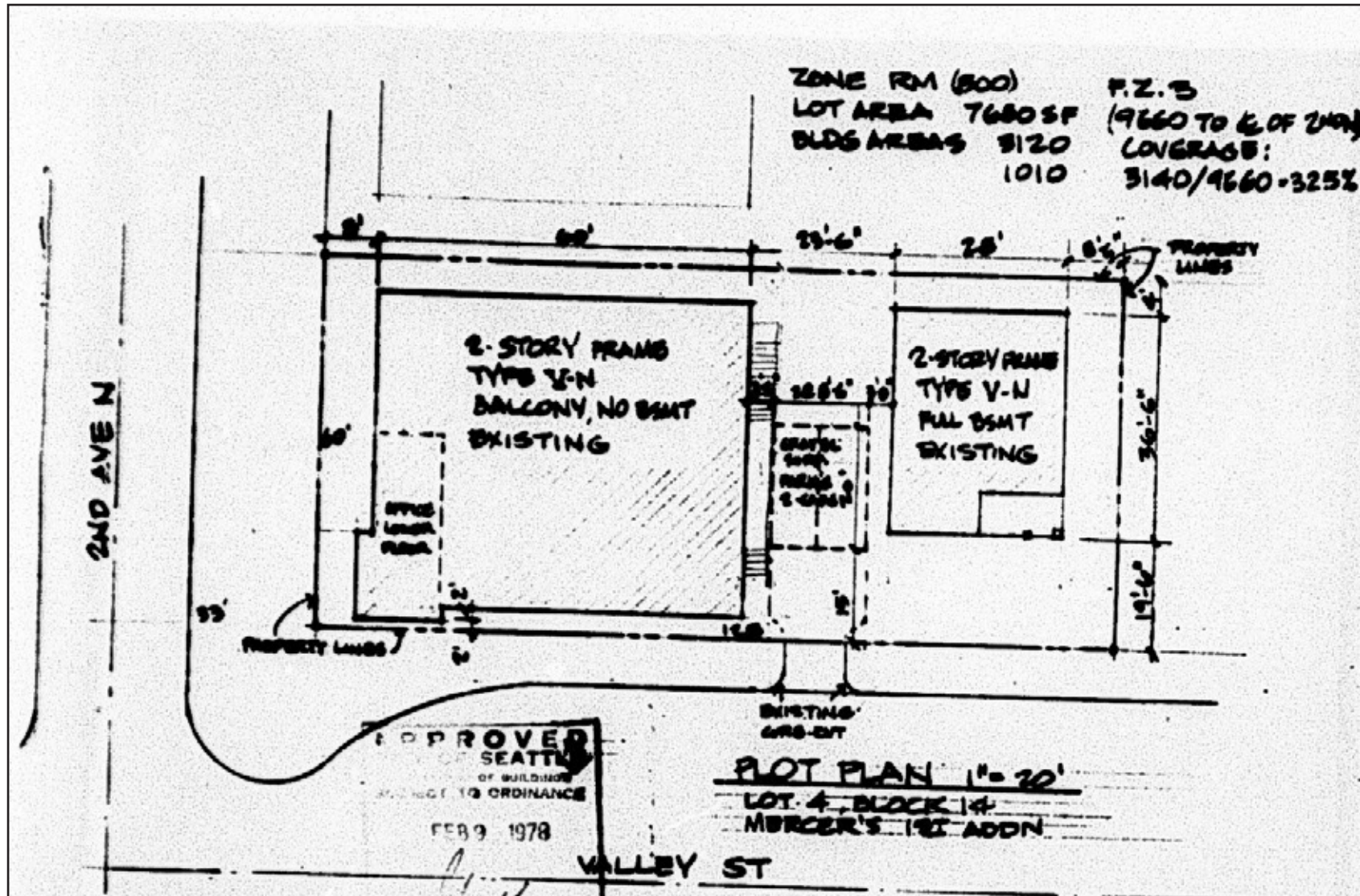
719 Second Ave N, Basement Level Floor Plans



719 Second Ave N, Main Floor Plans and Choir Space

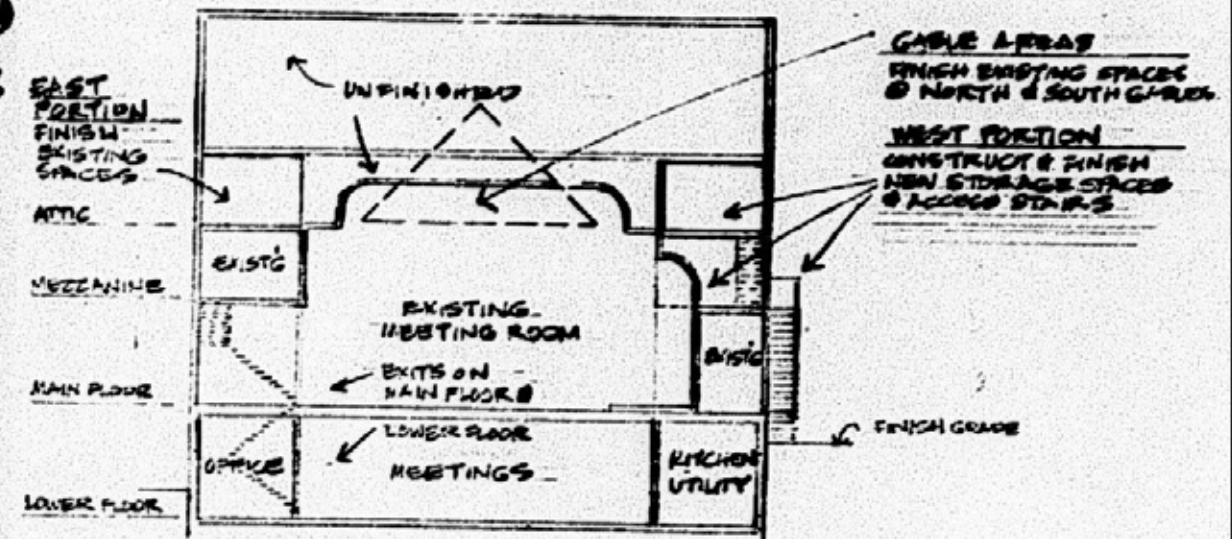


719 Second Ave N, Renovated Choir Level Floor Plans, Van Horne & Van Horne, 1978

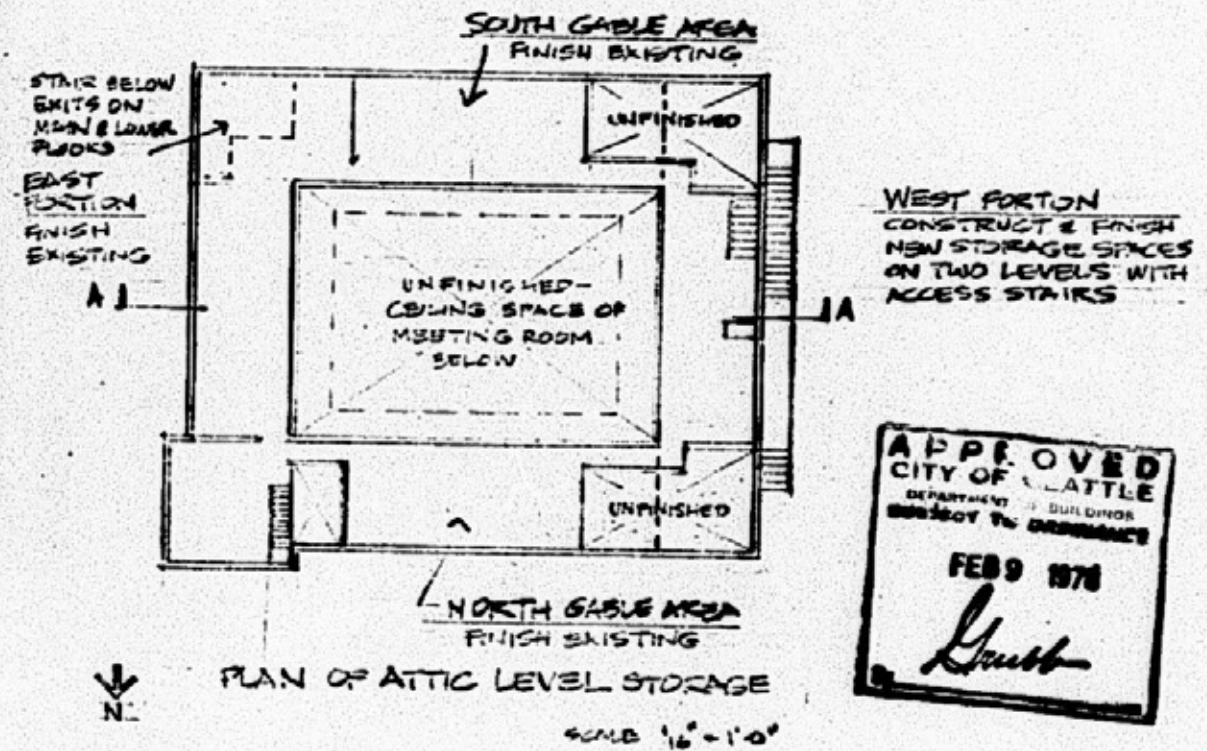


COUNSELING CENTER FOR PERSONAL COUNSELORS INC  
 719 2ND AVE N. AT VALLEY ST. SEATTLE

VAN HORNE  
 VAN HORNE / ARCHITECTS  
 103 BELLEVUE E. SEATTLE  
 3/6/72



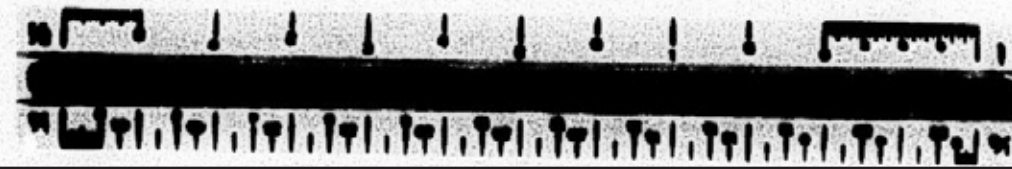
SECTION A-A

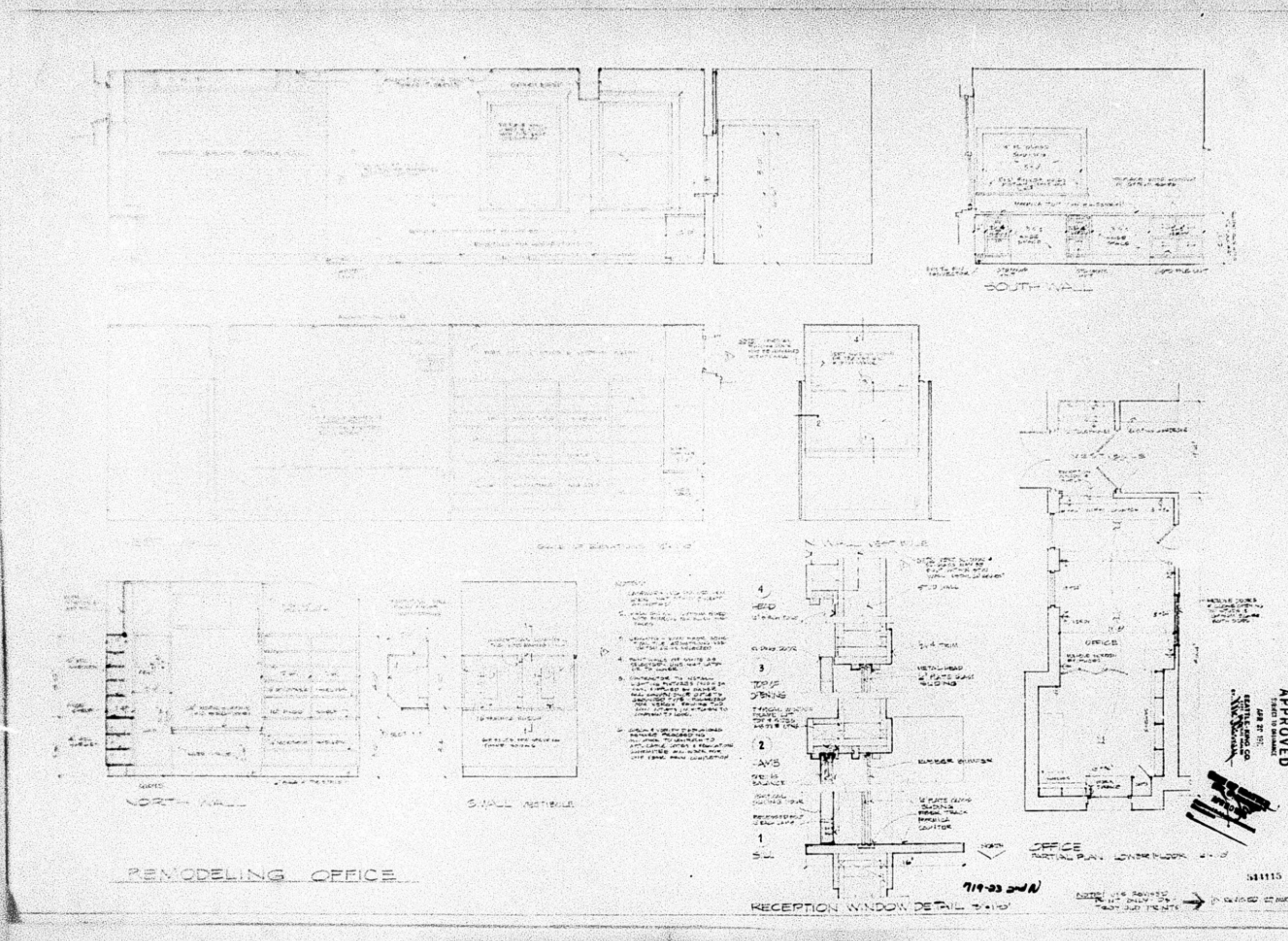


APPROVED CITY OF SEATTLE DEPARTMENT OF BUILDINGS SUBJECT TO ORDINANCE FEB 9 1978

*Luett*

VAN HORNE & VAN HORNE / ARCHITECTS 103 Bellevue Ave. East Seattle, WA 98108	COUNSELING CENTER FOR PERSONAL COUNSELORS INC. 719 2ND AVE N. SEATTLE	PLAN & SECTION SHOWING LOCATION OF ATTIC SPACES	PROJECT NO <b>R1</b> 1-30-78
---	--	---	------------------------------------





VAN HORNE ARCHITECTS  
 VAN HORNE / ARCHITECTS  
 103 BELLEVUE AVE E. SEATTLE

COUNSELING CENTER FOR PERSONAL COUNSELORS INC.  
 719 25 AVENUE N, AT VALLEY ST, SEATTLE

APPROVED  
 SEATTLE BUILDING CO.  
 1100 3RD AVENUE  
 SEATTLE, WA 98101

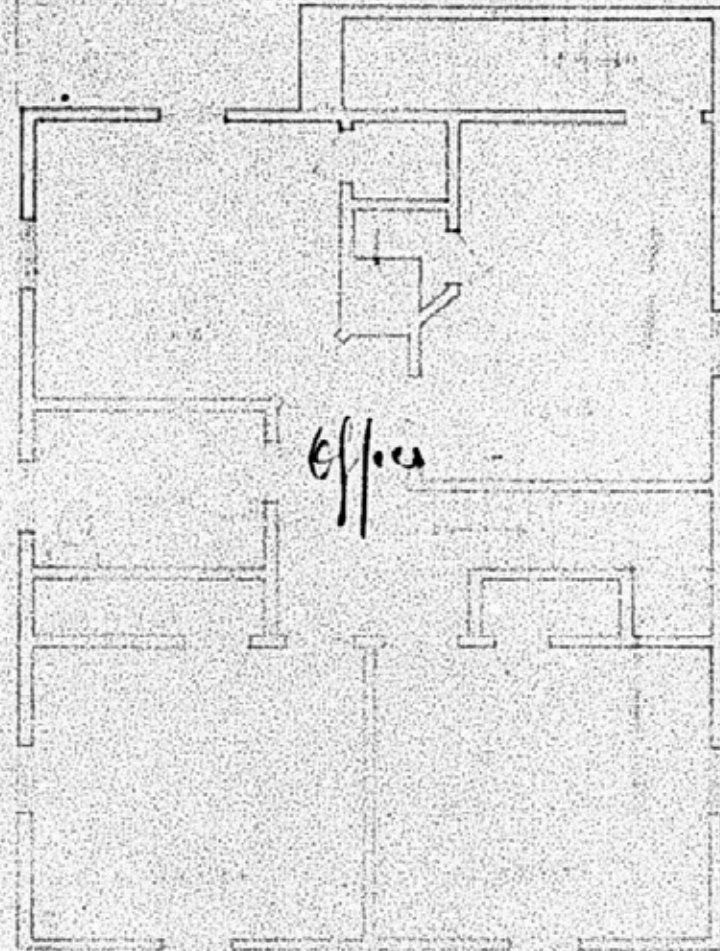
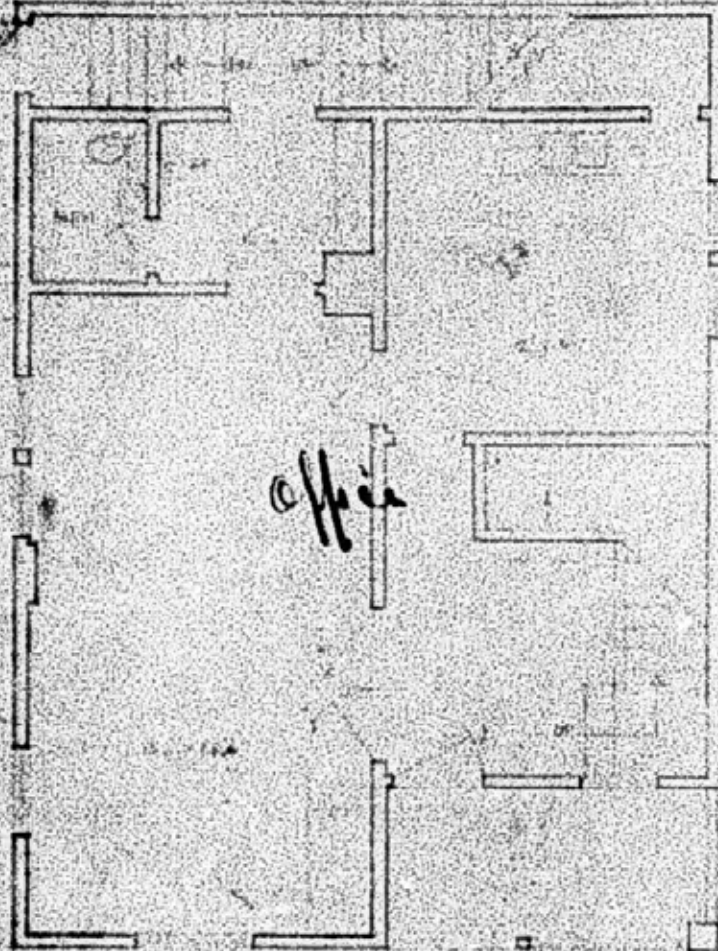


541115

719-25 AVENUE N, AT VALLEY ST, SEATTLE







LOWER FLOOR PLANS

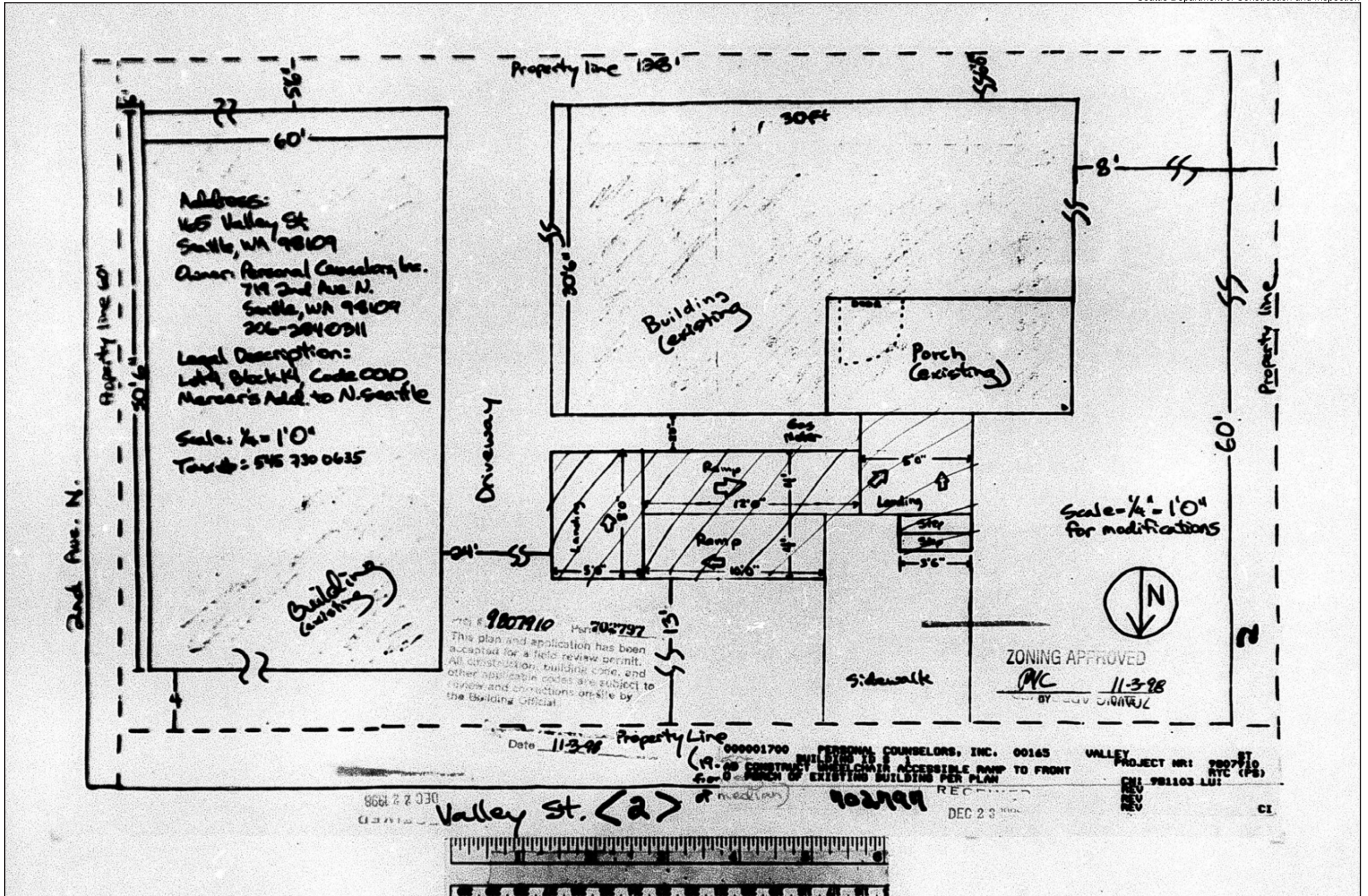
Counseling office:  
B-use

formerly S.S. (classroom)  
1. Stairs pkg. required  
2. provide  
See variance

50115

VALLEY STREET

SURVEY PLANS		
PERSONAL COUNSELORS INC.		23
2ND & VALLEY ST. SEATTLE, WASH.		NO. 1000
ERIC W. LONGB.	ARCHITECT	1-21-71
7701 40TH N.E.	SEATTLE, WASH.	



165 Valley Street, Site Plan with Ramp Addition, 1998